



CIVIL AVIATION BUREAU of JAPAN

COORDINATION PROGRAM WITH THE CDM PARTICIPATING AIRLINES FOR SEVERE WEATHER AVOIDANCE

**ICAO APAC ATFM SG/5
30th Mar. – 3rd Apr. 2015**

Air Traffic Management Center (ATMC)

Introduction

Strategic planning should be carried out in conjunction with ATC and the aircraft operators. Air Traffic Management Center(ATMC) started a route coordination program for severe weather avoidance in 2005 as such an ATFM measures.

The program has been developed since then, and now ATMC implement on-line route coordination between the CDM participating airlines and us. It enable us to execute pre-tactical ATFM operations.

ATMC had started on-line route coordination program with 6 CDM participating airlines in 2006, currently implements it with 12 airlines.

CDM participating airlines

CDM participating airlines:

airlines conclude “the arrangements regarding CDM and use of **ATW**” and cooperate with related facilities for air traffic management.

ATMセンター設置イメージA1

2004.12.22

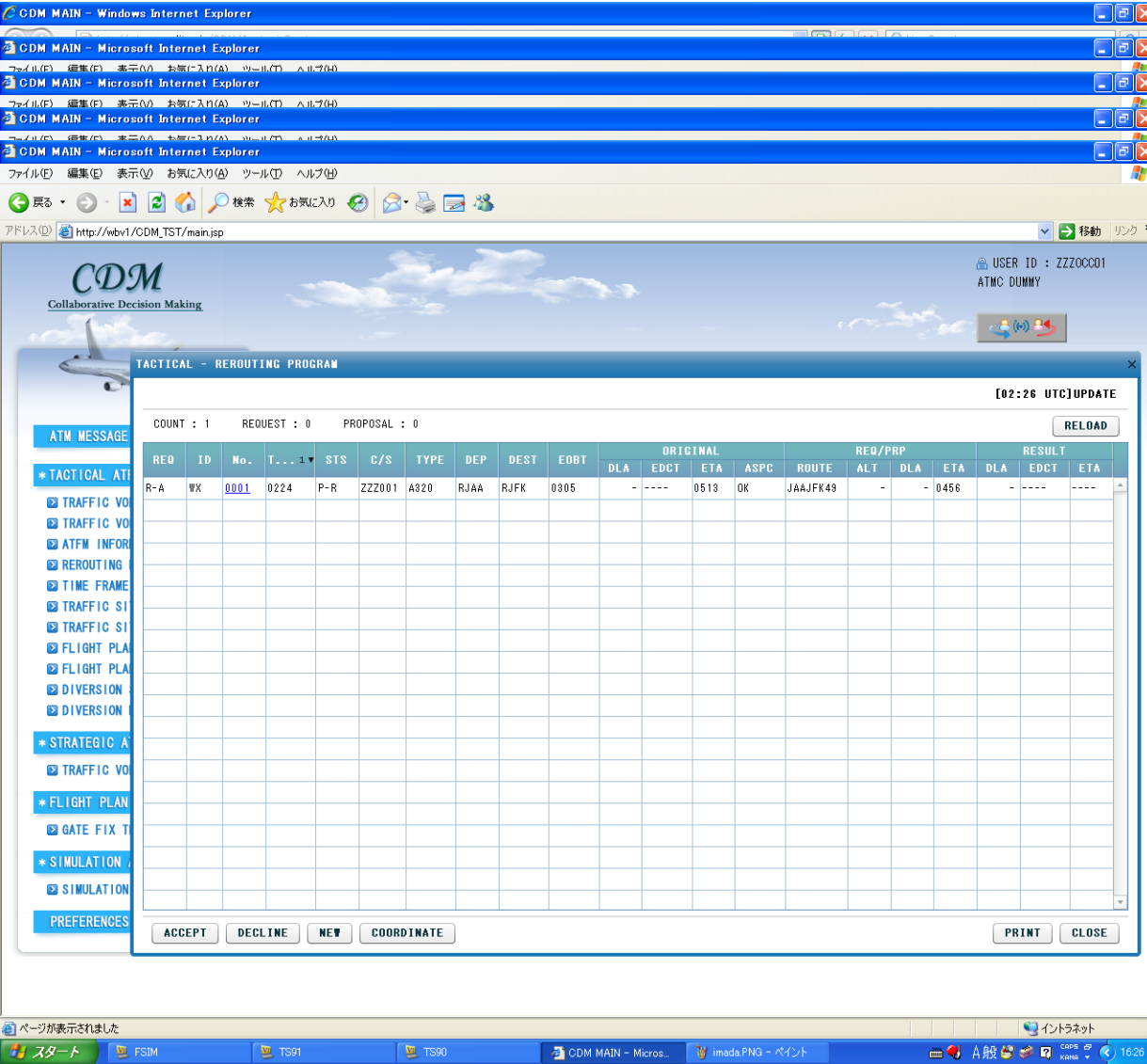
ATW(Air Traffic Management Workstation)
: a terminal of ATFM system used in airlines

ON-LINE



FMW(Flow Management Workstation)
: a terminal used in ATMC

CDM tool : ATW (Air Traffic Management Workstation)



→ OPERATION PLAN
(CDM conference -web-)

→ TRAFFIC VOLUME
(OVERVIEW)

→ TRAFFIC VOLUME
(DETAIL)

→ TRAFFIC SITUATION

→ REROUTING
PROGRAM

etc.

The table of registration routes for avoidance severe weather

AS A STRATEGIC PLANNING

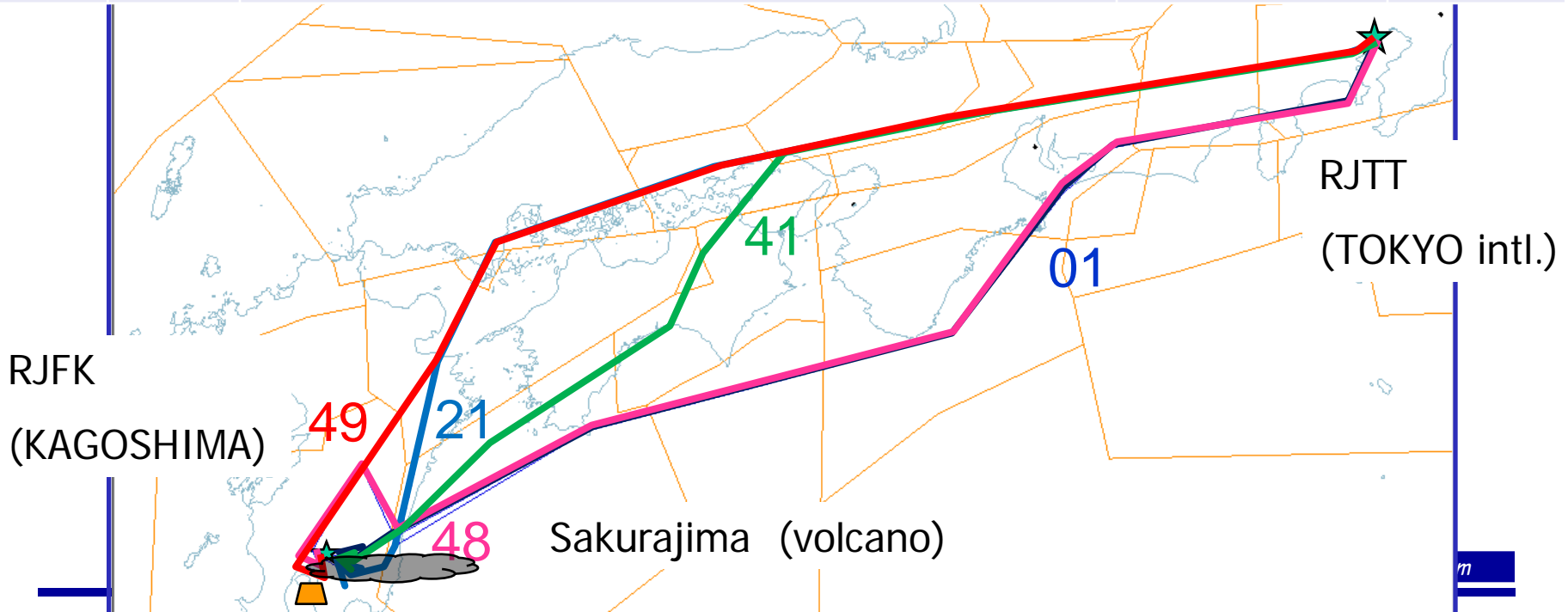
The recommended routes is published by AIC at almost all AIRAC dates besides that, ...

- ATMC provides **“The table of registration routes for avoidance severe weather”** for CDM participating airlines to execute on-line route coordination. It includes almost all the domestic city pairs in operation, currently 441 city pairs. Each city pair has several avoidance routes, so totally there are 1287 routes presently.

- The table is revised almost every AIRAC dates being considered the following, then updated into ATFM system.
 1. Change of NAVAIDS and ATS ROUTE, etc on AIRAC
 2. Requests from some airlines
 3. Volcanic activities (in recent years) etc.

Example of a city pair in the table

City pair	Num .	Route	Remarks	Related facility
RJTT RJFK	01	JYOGA Y56 KEC Y24 SUC Y757 JANUS	STANDARD	
	21	YANAG Y28 IWC Y45 TAE SIIBA MZE OHBIC HAYAT	WX AVOIDANCE	
	41	YANAG Y28 ASANO Y282 POPPY V53 KRE SUKMO Y50 DONKY Y754 SPICA Y757 JANUS	WX AVOIDANCE	RJDG (ACC)
	48	JYOGA Y56 KEC Y24 SUC MZE KROMA V54 MOCOS KGE	AVOIDANCE VA ONLY	
	49	YANAG Y28 IWC Y45 HKC KBE	AVOIDANCE VA ONLY	



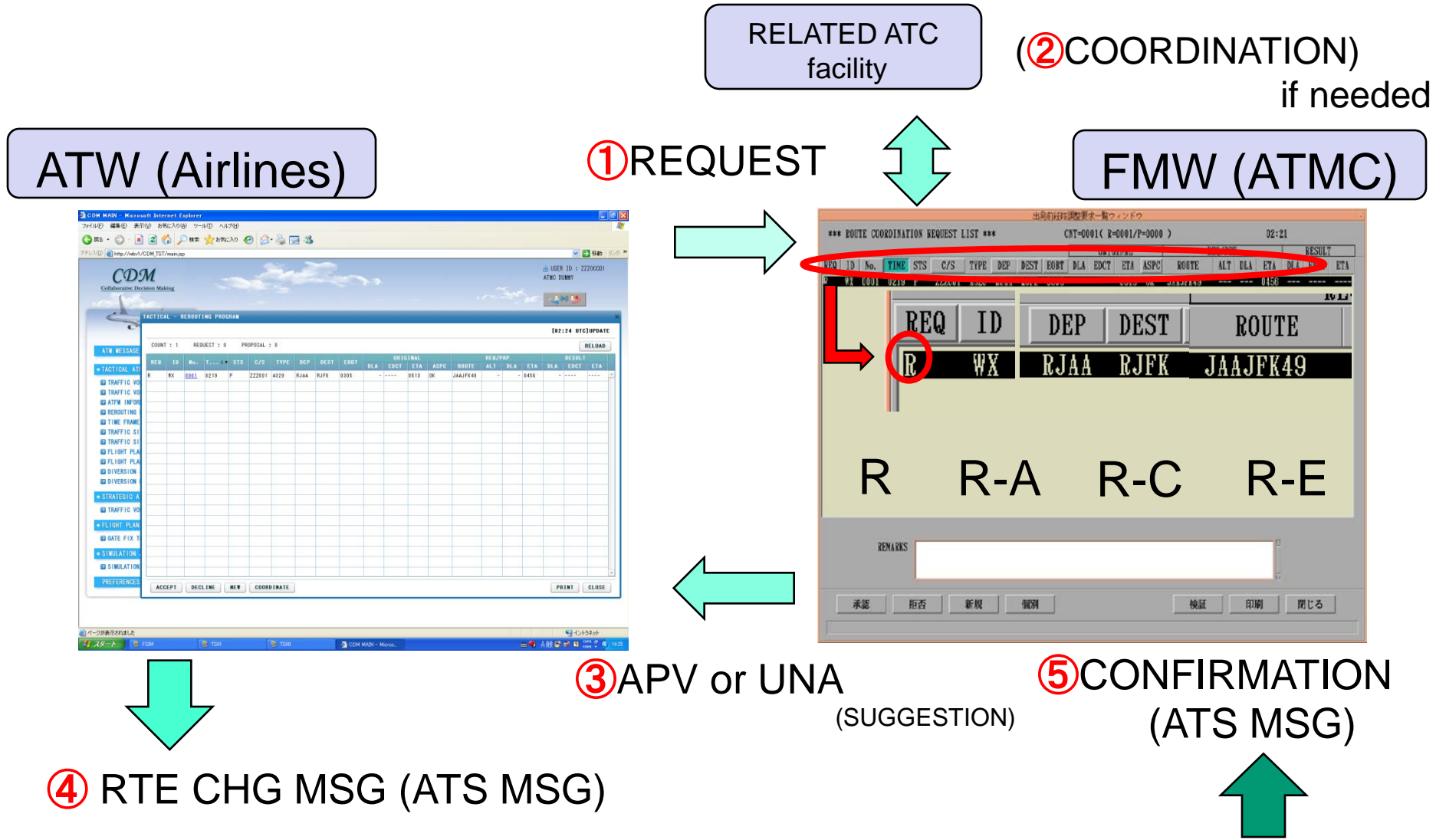
Requirements for on-line route coordination

ATMセンター設置イメージA1

2004.1.22

- Airline must be a CDM participating company.
- The aircraft must
 - a) depart from a domestic airport or
 - b) arrive at a domestic airport departing from a foreign airport.
- On-line coordination must be executed between 0500 and 2200 local time.
- On-line coordination must be executed 40 minutes prior to EOBT. etc.

Procedures for on-line route coordination



Benefits of on-line route coordination

For airlines

- To implement pre-tactical operation by using ATW
- To simplify route coordination with ATMC
- To Improve flexibility for irregular operation
- To input several routes into FMS in advance

ATMセンター設置イメージA1
2004.12.22

For ATMC

- To improve predictability and accuracy for ATFM
- Enable to suggest the alternative route taking account of traffic volume/flow.
- To simplify route coordination with airlines
- Enable to refer to records of past coordination

Thank you

